

ASSESSOR'S BLOCK BOOK FOR HARRIS COUNTY, TEXAS

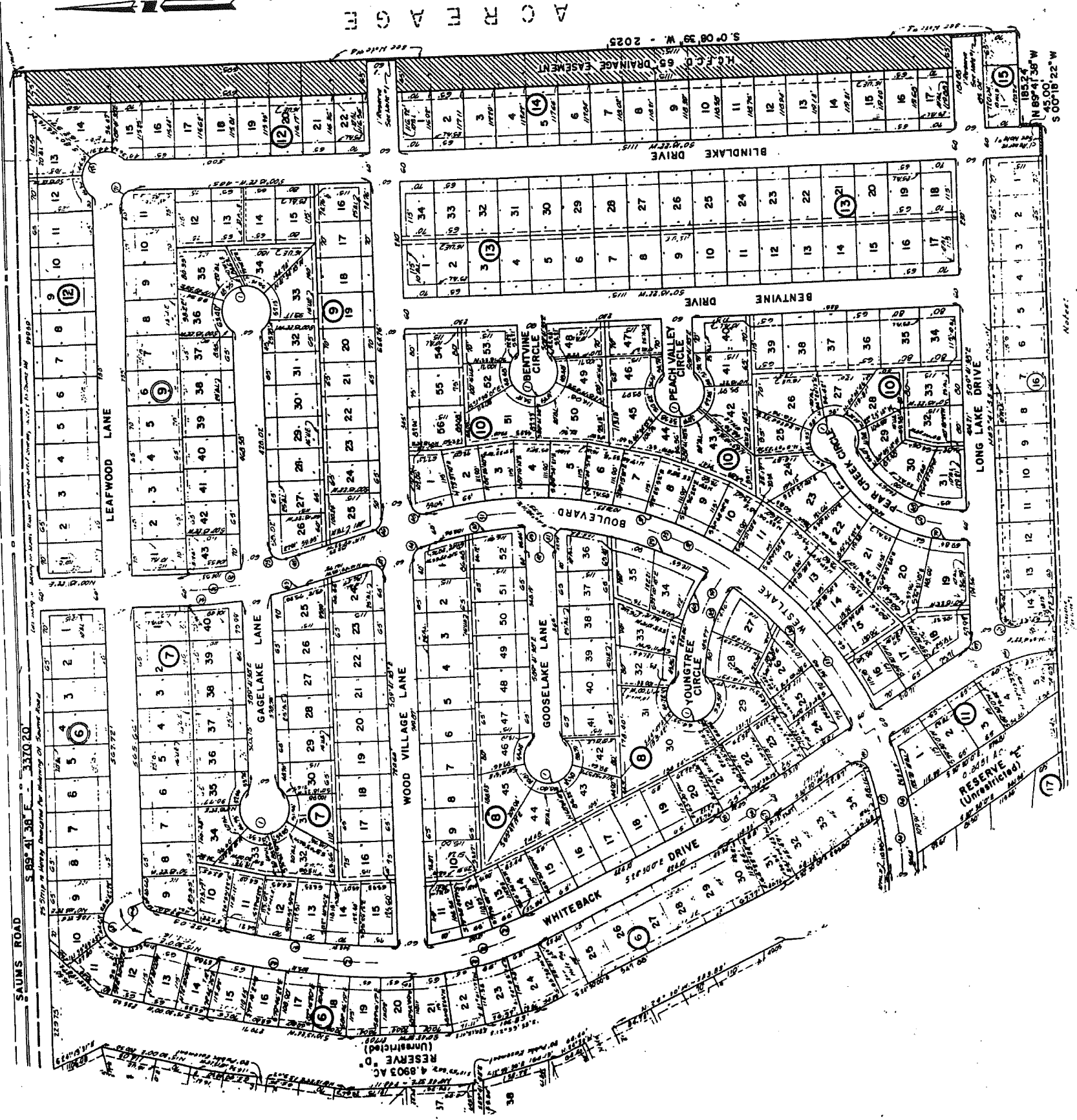
Block or 1 to 17-RES. A TO E. S. D. 19. Village.  
 Abstract No. 1371. Survey or Addition WESTLAKE SEC. 1. Plat No. 71-182.  
 Description: 159.8147 AC. W.C.R. CO. SUR. A-171. RESUBD. PLOTS. 83-84. MEADOWBROOK FARMS. VOL. 26 PG. 51.

No.	Vol.	TO WHOM ISSUED.	P A T E N T			ACREAGE	No.	CLASS	CHARACTER	TO WHOM ISSUED
			M	D	Y					

Scale 200' = one inch.  
 VERNON R. YOUNG JR. 1972.  
 WESTLAKE CORP.

Revalued 1975.  
 Unit 25 F = 1473

PLATE: 1 OF 2.



A C R T M A G M

25  
1473

ASSESSOR'S BLOCK BOOK FOR HARRIS COUNTY, TEXAS

Block or I TO 17-RES. A TO E  
 Abstract No. 1371 Survey or Addition WESTLAKE SEC. 1.

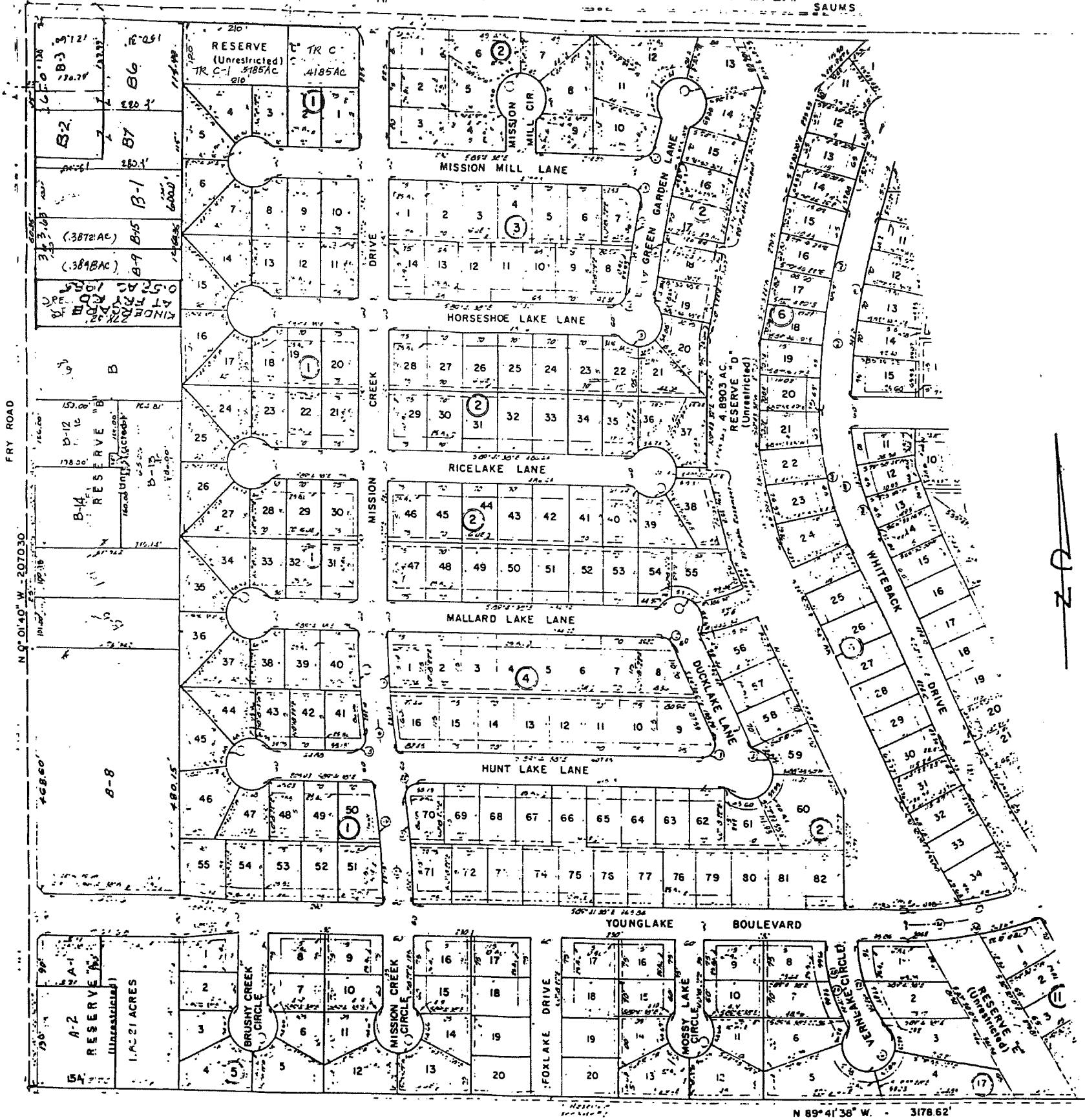
Plat No. 72-182. S. D. 19 Village.

Description:

PATENT		ACREAGE		DATE		CLASS		CERTIFICATE	
No.	Vol.	To Whom Issued	No.	Character	To Whom Issued	No.	Character	To Whom Issued	No.

Scale 200' = one inch.

PLATE: 2 OF 2.



N 89° 41' 36" W. 3178.62'

ASSESSOR'S BLOCK BOOK FOR HARRIS COUNTY, TEXAS

Village

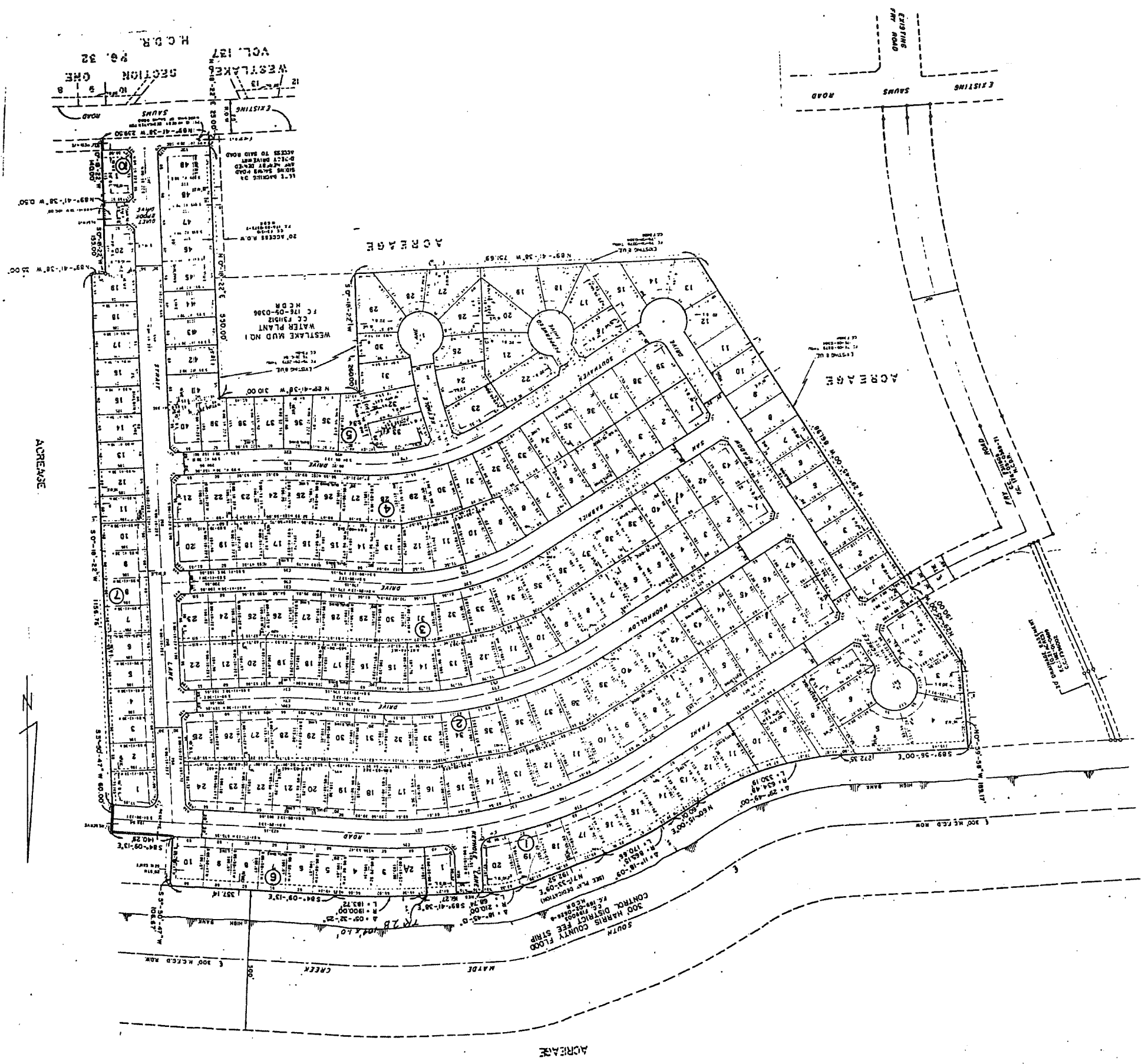
Plat No. 78-101 S. D. 12

Block or 179744 Survey or Addition WESTLAKE FOREST SEC. 1  
 Abstract No. 276 JAMES CLIFFORD SUR VOL. 42 PG. 70  
 Description: 47.87 AC.

PATENT		ACREAGE		DATE		TO WHOM ISSUED		CERTIFICATE		TO WHOM ISSUED	
No.	Vol.	M	D	Y	No.	Class	Character	No.	Class	Character	No.

1979 UNIT 50FF 7000 R3

Scale 200' = one inch.  
 Recorded map 1978  
 Approved



*John B. ...*

ASSESSOR'S BLOCK BOOK FOR HARRIS COUNTY, TEXAS

Block or 670/2  
 Abstract No. 216 Survey or Addition, WESTLAKE FOREST, SEC. 2 Plat No. 78-102 S. D. 19 Village  
 Description: 55.57 AC. JAMES GUILFORD, SUB. VOL. 92 PG. 70

No.	Vol.	TO WHOM ISSUED	DATE		ACREAGE	No.	CLASS	CHARACTER	CERTIFICATE TO WHOM ISSUED
			M	D					

**ADD A CORRECTION PLAT FOR 1982  
 NO CHANGE**

Scale 200' = one inch.  
 RICHWOOD CORP. 1976  
 RICHWOOD CORP.

1/14/79  
 1979  
 HOOFF  
 1981  
 50 FF

