



HARRIS COUNTY PRECINCT 4  
COMMISSIONER  
LESLEY BRIONES

**FISCAL YEAR | 2023 - 2024**



# PLACES 4 PEOPLE

Call for Partnership Projects Guidelines

# TABLE OF CONTENTS

---

- 03** CORE VALUES AND POLICY PRIORITIES
- 05** PROGRAM OVERVIEW
- 10** CAPITAL PROJECTS SCORING CRITERIA
- 15** MAINTENANCE PROJECTS SCORING CRITERIA
- 19** SCORING CRITERIA TABLES
- 20** POINTS OF CONTACT
- 20** SELECTION SCHEDULE
- 21** SAMPLE RESOLUTION TEMPLATE

*PAGE LEFT INTENTIONALLY BLANK*

# PRECINCT 4 INFRASTRUCTURE CORE VALUES AND POLICY PRIORITIES

---



## EQUITY

Ensures each community receives the level and type of investment appropriate for its respective needs that will improve socioeconomic outcomes for all.



## RESILIENCE

Focuses on adapting communities to (a) better withstand the impact of major shock events which threaten or impact residents' immediate safety and well-being, and (b), reduce the impact of chronic stressors that weaken the natural, built, or human resources in a community.<sup>1</sup>



## SUSTAINABILITY

Emphasizes emission reductions by building multifunctional and state-of-the-art infrastructure in a fiscally responsible manner that can be sustained for its full lifecycle. Additionally, sustainable infrastructure investments seek to minimize the impact to natural and cultural resources, allow residents to lead lower carbon lifestyles, and reduce the impact of climate change.



## COMMUNITY SUPPORT

Relates to engaging residents of Precinct 4 in the planning and design of projects. Initiatives with robust engagement and support ensures that infrastructure investments are aligned with community values and priorities.



## HEALTHY PLACES AND BUILDINGS

Pertains to introducing public space and interior buildings that optimize human health, wellness, and productivity.

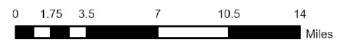
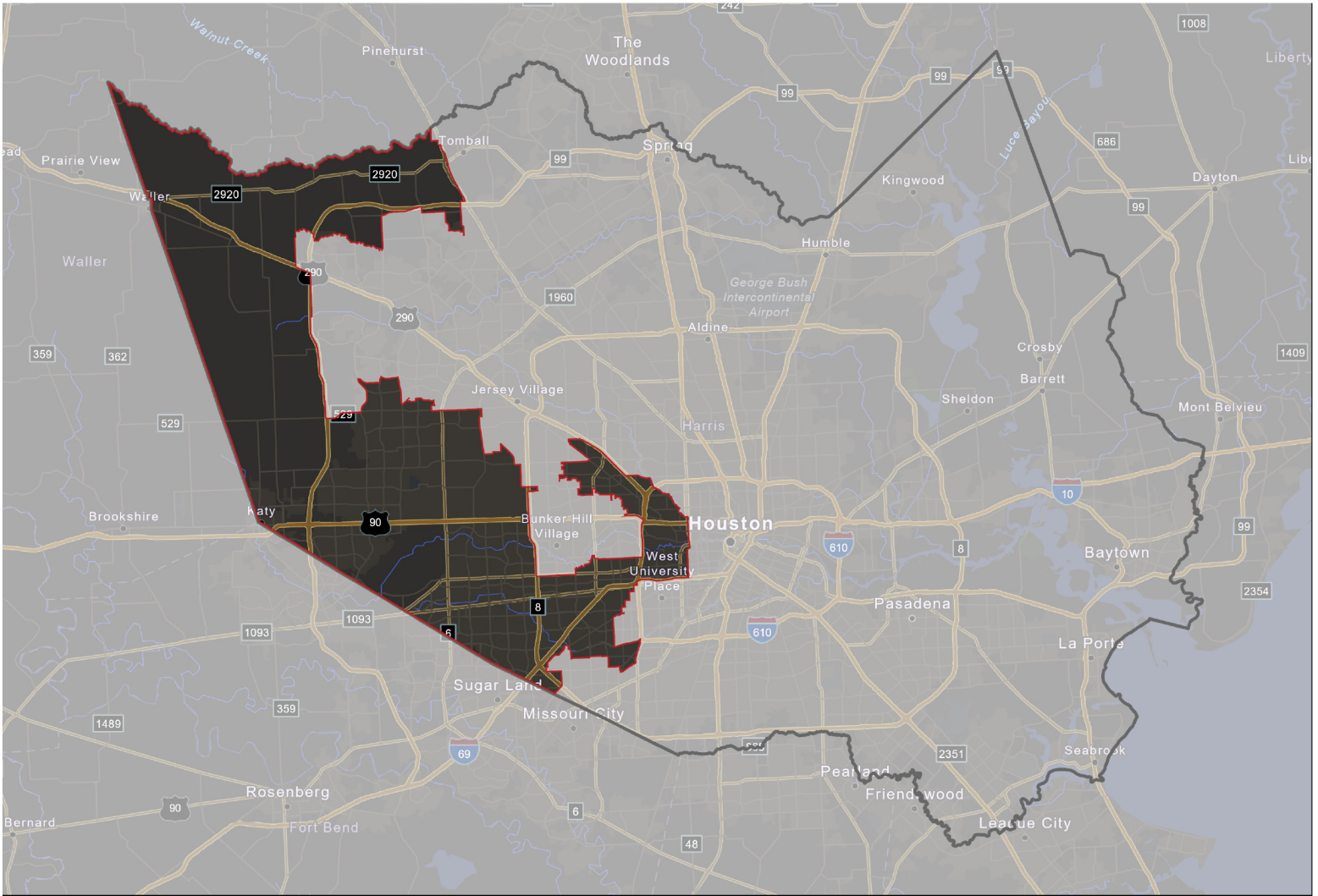


## UNIVERSAL DESIGN

Emphasizes access to public space, streets, parks, and buildings for users of all abilities, ages, or other factors.

---

<sup>1</sup> Examples of major shock events might be tied to the impact of climate change or environmental hazards such as Hurricanes, flooding, chemical spills, or wildfires. Chronic stressors are related to economic and social challenges that affect the population on a routine basis, such as, lack of affordable housing, exposure to crime and violence, high transportation costs, inadequate park and greenspace, limited access to fresh food, poor air quality, lack of access to healthcare, or related.



# Harris County Precinct 4 Map

# PROGRAM OVERVIEW

---

# PROGRAM OVERVIEW

Commissioner Lesley Briones is committed to developing partnerships that will better serve the people of Precinct 4 and is proud to announce the opening of the FY 23 Places 4 People Call for Partnership Projects!



# APPLICATION PROCESS

---



# CALL FOR PROJECTS RULES

For the first time, Harris County Precinct 4 is proactively seeking Capital Improvement Projects (CIP) and maintenance partnership projects from area agencies to serve communities throughout Harris County Precinct 4. This program only applies to the allocation of the following Harris County resources: *funding for study, final design, right-of-way acquisition, and construction of capital and maintenance projects.*

- Eligible applicants include cities, School Districts, Municipal Utility Districts (MUDs), Tax Increment Reinvestment Zones (TIRZs), Municipal Management Districts (MMDs), Public Transit Agencies, Economic Development Corporations (EDCs), Housing Authorities, and other local government corporations (LGCs). Project sponsors must have a letter of support from the government entity or owner of the asset.
- Proposed projects must be in Harris County Precinct 4 or establish a direct, immediate nexus to infrastructure or natural systems in Precinct 4.
- Only eligible costs identified in the project application will be considered. Estimated costs for planning, design, environmental determination and mitigation, right of way acquisition, and construction must be identified in the application to be considered as eligible costs.
- All projects must have a letter of funding commitment or a letter of support from the organization's leadership expressing the agency's support for the project. Projects within multiple jurisdictions must provide letters of support from each jurisdiction.
- Applicants must have approval in the form of a resolution from its respective legislative body (i.e., City Council/Board) to commit funding and work with Precinct 4 on partnership projects. Precinct 4 will not consider the project for funding until a resolution has been passed by the applicant's legislative body. (Please refer to attached sample resolution template at the end of this document.)

Precinct 4 team members listed under the "Points of Contact" section of this document will coordinate the application process.

The Precinct 4 recommendation of a potential project through the Call for Projects by Harris County Precinct 4 **does not** guarantee county funding; funding may be subject to approval by a majority of members of Harris County Commissioners Court

## PROJECT SUBMITTAL PROCESS

*Applications may be made electronically by email or CD, including a signed letter of intent (LOI).* Project submittals should clearly address the project evaluation criteria listed herein. Maps, renderings, or other visuals demonstrating prospective project elements are encouraged to bolster the application.

Additionally, where community plans are referenced, copies of those plans should be included with specific references to the pages and exhibits in such plans that demonstrate the community's intent in support of the applicant's submittal.

In addition to new projects, Harris County Precinct 4 requests that agencies resubmit projects that may have been previously reviewed by past administrations but were not selected.

Proposed projects will be evaluated based on the criteria outlined in the following section and for alignment with the Precinct's core values. As part of the selection progress, applicants will be required to make a presentation to Harris County Precinct 4 staff.

# CAPITAL PROJECTS SCORING CRITERIA

---



# CAPITAL PROJECTS SCORING CRITERIA

The scoring criteria allows Precinct 4 to establish clear ground rules for all applicants and review submissions according to the Precinct's core values and policy priorities.

Project submittals that do not incorporate letters of intent (LOIs) (or a reasonable justification for not having an LOI) are disqualified from consideration.

Funding applications will be considered for projects between \$350,000 and \$20,000,000.

Through the weighted criteria listed below, a maximum total of 100 points per project is possible. If insufficient data is provided for a criterion, no points will be awarded in that category. No set point threshold exists for determining the Precinct's recommendation decisions; the threshold is established following evaluation of a given year's submittals and based on available funds.

# SCORING CRITERIA, MAXIMUM POINT VALUE AND ASSOCIATED SUBMITTAL REQUIREMENTS ARE LISTED BELOW:

**0**  
POINTS

## *Project Description*

Include a summary of the proposed project, with a location map and information concerning project goals, problems to be addressed, anticipated project features, and relationships to any other planned, ongoing or completed infrastructure projects.

**10**  
POINTS

## *Funding Commitment and Agency Priority*

Demonstrate the financial commitment and timing to the project. Several integrated projects required to improve a particular watershed/corridor may be consolidated and classified as a single, phased project.

- Is the agency ready to fund and implement the project and enter into an Intergovernmental Agreement?
- Is the project a part of or consistent with an articulated, short or long-range CIP program, Harris County Flood Control District or applicant's strategic plan? If so, the component of the plan indicating the project and its priority for the applicant should be included in the submittal.
- Does the project have a current schedule of funding, implementation, including anticipated milestones and deliverables?

**10**  
POINTS

## *Community Plan Recommendation*

Discuss how the proposed project originates from existing or ongoing community plans in transportation, parks, drainage, economic development, housing, placemaking, [or other subarea] plans. For reference, community plans may include H-GAC Livable Centers, City of Houston Complete Communities, Municipal Comprehensive Plans, mobility plans, capital improvement plans, MUD or TIRZ strategic plans, among other planning initiatives.

Points will be awarded based on the project's relative significance or priority within the overall community plan. If the plan was formally adopted (e.g., through council action) by the applicant, this should be indicated on the LOI for the project submittal. **A copy of the plan, or an executive summary, must be provided with the application submittal and its recommendations properly referenced to receive points in this category.**

**25**  
POINTS

## *Improvements to Drainage, Public Safety, and Mobility*

Existing threats to people, property, or public safety should be identified in this section. Include descriptions of how the proposed project will alleviate threats (i.e., flooding, congestion, bicycle/pedestrian hot spots, connectivity gaps, etc.). Fewer points will be awarded to those projects that are intended to resolve issues caused by the applicant's inadequate policies or incentives/subsidies that distort outcomes of flooding, public safety, or mobility/access.

*(continue on next page)*

# IMPROVEMENTS TO DRAINAGE, PUBLIC SAFETY, AND MOBILITY (CRITERIA)

## Drainage

Flood return frequency protection is preferred compared to protection under existing conditions. Preference is given to projects offering higher flood return frequency (e.g., 10- year to 100-year) protection. When applicable, information regarding both the anticipated design level of protection and the effective level of protection, such as that provided by storm drains combined with curb and gutter roadways, should be provided.

## Public Safety

Interventions to reduce traffic fatalities and crashes, technological inequities, sexual discrimination and harassment, disparities in urban heat and life expectancy, and racial or income inequality.

## Mobility

Priorities will be given to projects that incorporate best practices in multimodal transportation access, context-sensitive design, or Complete Streets to protect the most vulnerable road users. Explain if the project improves connections to public transit stops/stations, parks, schools, health care facilities, office/retail destinations, and employment.

All three categories should include data to support claims made for drainage, public safety, or mobility improvements (see table for more information). Additionally, the land use profile should be described where the project is proposed. Preference given to projects that serve a mix of land uses, compact development, or prior affordable housing investments. If there is not a mix of land uses, explain how the project connects or improves connectivity between areas with different land uses patterns (i.e., improved connectivity between neighborhoods to commercial/retail, parks, schools, or other destinations).

Table: Example Criteria Information

TOPIC	DESCRIPTION	DATA POINT	LAND USE PROFILE	DEMOGRAPHICS & EQUITY PROFILE	CO-BENEFITS
Drainage	Detention basin at Random Creek	insert number of additional detention capacity	Low-density, single-family residential subdivision with commercial corridors	Low to moderate income families; history of flooding. -median household income comparable to Harris County median	Trails, bioswales, pedestrian lighting, library, etc.
Public Safety	Tree planting, public art murals, and pedestrian lighting at Random Intersection	- insert urban heat data - 10 bus stops in unshaded corridors - 1/4 of streets have pedestrian lighting in neighborhood	-Medium-density, mixed use development district. -Park and library within 5-minute walk.	-High poverty neighborhood, high crime rate, high public transit ridership. -% poverty comparable to Harris County - # of assaults - # of public transit ridership by stop.	Green stormwater infrastructure, arts/culture programming with area schools, etc.
Mobility	Traffic calming improvements at Random Street	- # of high-injury network streets - # of pedestrian and bicycle crashes and fatalities in the area	Low-density, single-family residential subdivision with commercial corridors	- Elderly neighborhood with low automobile ownership - % age 65+ comparable to Harris County	Green stormwater infrastructure, arts/culture programming with area schools, etc.

(continue on next page)

## IMPROVEMENTS TO DRAINAGE, PUBLIC SAFETY, AND MOBILITY (CONT'D)

The submittal should answer these questions, to the greatest extent possible and should include third-party data as part of the responses:

- Is the project intended to address an existing flooding hazard, roadway congestion, traffic calming, and/or access issues? To what degree has there been documented flooding of structures during federally declared disasters?
- Does the project address public safety concerns through an inclusive approach to health, wellness, housing, and/or crime prevention through environmental design (CPTED)?
- What number of vehicular or pedestrian crash-related incidents or deaths have occurred in the project area to date, and how will the project help prevent or lessen these incidents or deaths in the future?
- How many people, housing units, and/or structures would benefit from the proposed project?
- What amount of infrastructure (roads, drainage/flood control or wastewater facilities, etc.) would benefit or be enhanced (e.g., storm drain capacity increase from 2-10 years.)?

### *Demographics and Equity*

Describe the population characteristics and general description of the area where the proposed project will reside. Make a case for the proposed project by discussing how the affected area's population would be significantly impacted. Highlight if the community is particularly socially vulnerable, historically disadvantaged, or has unique population characteristics that differ from the overall Harris County region. The submittal should answer these questions, to the greatest extent possible:

**20**  
POINTS

- What current population would directly and indirectly benefit from the project? Include any relevant demographics that demonstrate the impact of the proposed project, particularly how the area's demographics differ from the County's overall, such as, overrepresentation of elderly, disabled persons, or children if you're proposing walkability improvements. (other examples may include race/ethnicity, income status, poverty, etc.)
- What is the age of development in the area?
- How long has the problem existed?
- What is the number of benefitted service or community institutions (schools, libraries, churches, hospitals, etc.)?

*(continue on next page)*

## Co-Benefits

Projects with multiple benefits will score higher than those with singular solutions. Document if the proposed project aims to solve multiple issues with partnership funding. Please document co-benefits of the proposed project as it relates to these topics:

- **Water Conservation/Recharge (3 points)** opportunities if one of the following is applicable: Will promote the efficient reuse of stormwater? Work to sustain or increase groundwater levels? Improve aquifer quality? Water quality implications, will stormwater be managed through basins or wetlands prior to its discharge to the receiving waters?
- **Low-Impact Development (LID) (3 points)** if the project will include green stormwater management techniques (bioswales, rain gardens, bioretention basins, prairie restoration, or other low impact development methods or features.)
- **Equitable Economic Impact (3 points)** if one of the following is applicable; Does the project provide a benefit needed for economic development? Will the project enhance economic diversification, small business expansion, retention, and/or supporting businesses that provide living wages? Does the project facilitate upskilling the existing labor force? Is the project consistent with the applicant's development strategic plan?
- **Environmental and Ecological Stewardship (3 points)** such as contributions to the landscape or environment through preservation or enhancement of the natural and cultural character of Harris County. Examples include opportunities for environmental, arts/culture education within the community or the protection of vegetation, wildlife habitat, or environmentally sensitive areas (e.g., designated wildlife areas or riparian corridors).
- **Other Quality of Life Contributions (3 points)** if the project includes multiple uses with one investment, such as detention ponds with parks and greenspace programming or shared-use paths, arts/cultural/environmental educational or community spaces in parks, restoration of riparian and native desert habitats, and other open public or space uses and activities.

**15**  
POINTS

## Level of Partner Participation

Include the proposed cost-share contributions by the applicant and/or other agencies involved in delivering the project. Harris County Precinct 4 requires a minimum of 20% cost-share contribution from its partners, with additional points being accrued for greater participation. See table on Level of Partner Participation.

If a future bond or debt obligation is identified as a source of funding, this should be reported in the submittal.

Forms of cost-share participation may include:

- Direct agency funding
- Non-cash contributions (e.g., rights of way, land acquisition, materials/labor, final design, etc.);
- Previously acquired land required for the project (not to exceed 30% of an agency's cost share credit); and
- Third-party funding sources already received (e.g., federal funds, grants, or private contributions).

Table: Example Criteria Information

MATCH	POINTS
20%	5
30%	10
40% or more	15

**15**  
POINTS

## Operations and Maintenance Costs to Harris County (5 Points)

Outline the total operations and maintenance costs to be borne by Harris County vs. another entity. Discuss which entity or will operate and maintain the project, how it will do so, and the estimated annual operations and maintenance costs. Maximum ratings are assigned to requests with minimal operations and maintenance costs to be borne by the County or HCFCD.

**5**  
POINTS

# MAINTENANCE PROJECTS SCORING CRITERIA

---





# MAINTENANCE PROJECTS SCORING CRITERIA

Established scoring criteria will allow Precinct staff to uniformly evaluate agency requested maintenance projects. Any assets repaired through this program shall remain maintained by its current agency.

Project submittals that do not incorporate LOIs are disqualified from consideration. Through the weighted criteria listed below, a maximum total of 100 points per project is possible. If insufficient data is provided for a criterion, no points will be awarded in that category. No set point threshold exists for determining the Precinct's recommendation decisions; the threshold is established following evaluation of a given year's submittals and based on available funds.

# SCORING CRITERIA, MAXIMUM POINT VALUE AND ASSOCIATED SUBMITTAL REQUIREMENTS ARE LISTED BELOW:

**0**  
POINTS

## *Project Description*

A summary of the proposed project, including a location map and information concerning project goals, problems to be addressed, anticipated project features, and relationships to any other planned, ongoing or completed infrastructure projects.

**25**  
POINTS

## *Safety*

Describe existing threats to life and property. Fewer points will be awarded to those projects that are intended to resolve issues caused by inadequate policies or incentives/subsidies. The submittal should answer some or all these questions:

- Is the project intended to address an existing flooding hazard, traffic safety, and or mobility issue?
- Has documented flooding of structures, vehicular or pedestrian crash-related incidents or deaths occurred that would be prevented or lessened in the future by the project?

**20**  
POINTS

## *Infrastructure Condition*

Condition of existing infrastructure requiring maintenance should include visual aids to support your application. Describe the age and condition of infrastructure and lifecycle needs.

**25**  
POINTS

## *Demographics and Equity*

Describe the population characteristics and general description of the area where the proposed project will reside. The submittal should answer these questions:

- What current population would directly and indirectly benefit from the project? Include any relevant demographics that demonstrate the impact of the proposed project, particularly how the area's demographics differ from the County's overall, such as, overrepresentation of elderly, disabled persons, or children if walkability improvements are being proposed. (other examples may include race/ethnicity, income status, poverty, etc.)
- What is the age of development in the area, and how long has the problem existed?
- What is the number of benefitted service or community institutions (schools, libraries, churches, hospitals, etc.)?
- What amount of infrastructure (roads, drainage/flood control or wastewater facilities, etc.) would benefit or be enhanced (e.g., storm drain capacity increase from 2-10 years.)?

*(continue on next page)*

## Level of Partner Participation, Funding Commitment and Agency Priority

Include the proposed cost-share contribution by the applicant or other agencies. Harris County Precinct 4 requires at least a 20% cost-share contribution from its partners. Preference is given to projects with higher percentages of cost-share contribution. See table on Level of Partner Participation.

**15**  
POINTS

- Is the agency ready to fund and implement the project and enter into an Intergovernmental Agreement?
- Is the project a part of or consistent with an articulated, short or long-range maintenance program, Harris County Flood Control District or Agency's departmental strategic plan? If so, the component of the plan indicating the project should be included in the submittal.
- Does the project have a current schedule of funding, implementation, including anticipated milestones and deliverables?

Rank in priority (from first to last) among the agency's current fiscal year submittals. A number of integrated projects required to improve a particular asset may be consolidated and classified as a single, phased project. Demonstration of financial commitment and timing to the project should also be referenced. The submittal should answer some or all these questions:

Table: Funding Commitment Score

MATCH	POINTS
20%	5
30%	10
40% or more	15

- Is the agency ready to fund and implement the project and enter into an Intergovernmental Agreement?
- Is the agency ready to fund and implement the project and enter into an Intergovernmental Agreement?
- Is the project a part of or consistent with an articulated, short or long-range maintenance program, Harris County Flood Control District or Agency's departmental strategic plan? If so, the component of the plan indicating the project should be included in the submittal.
- Does the project have a current schedule of funding, implementation, including anticipated milestones and deliverables?

## Operations and Maintenance Costs to the Harris County

Reference the total operations and maintenance costs to be borne by Harris County vs. another entity. Maximum ratings are assigned to requests with minimal operations and maintenance costs to be borne by the County or HCFCD. Projects should align with Core Values and Policy Priorities in order to be eligible.

**15**  
POINTS

# SCORING CRITERIA TABLES

Figure: Capital Projects Scoring Table

<b>CRITERIA</b>	<b>MAXIMUM SCORE</b>
Description	0
Funding Commitment & Agency Priority	10
Community Plan Recommendation	10
Improvements to Drainage, Public Safety, and Mobility/Access	25
Demographics & Equity	20
Co-Benefits	15
Partnerships	15
O/M Costs	5
<b>TOTAL</b>	<b>100</b>

Figure: Maintenance Projects Scoring Table

<b>CRITERIA</b>	<b>MAXIMUM SCORE</b>
Description	0
Safety	25
Infrastructure Condition	20
Demographics & Equity	25
Partner Participation, Funding, and Priority	15
O/M Costs	15
<b>TOTAL</b>	<b>100</b>

# Points of Contact

---

## **Proposals should be submitted online and/or to:**

Janelle Del Pilar Administrative Assistant  
Infrastructure Division  
jdelpilar@hcp4.net  
Office: 281-787-8822

## **General Questions about the Call for Projects should be directed to:**

Luis Guajardo, AICP  
Manager of Planning  
LGuajardo@hcp4.net  
Office: 832-927-4465

# Selection Schedule

---

<b>April 17, 2023</b>	<b>Agency Notices Mailed</b>
<b>June 16, 2023</b>	<b>Applicant Proposals Submittal Deadline</b>
<b>July 10 – 28 , 2023</b>	<b>Finalist Interviews</b>
<b>August 4, 2023</b>	<b>Precinct 4 Project Evaluation Completion</b>
<b>August 14, 2023</b>	<b>Precinct Recommendations &amp; Notices</b>

# SAMPLE RESOLUTION TEMPLATE

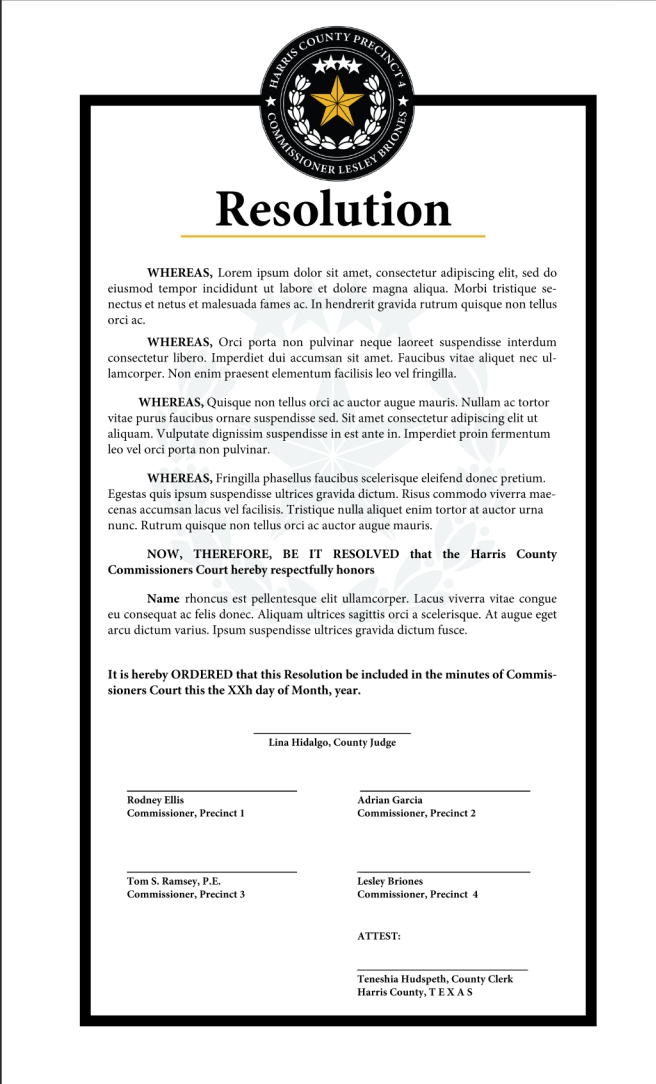
WHEREAS, (name of entity) is a (city/school district/special purpose district/nonprofit) with (residents/students/clients) who are also constituents of Harris County Precinct 4; and

WHEREAS, both entities share the goal of improving the safety, opportunity, and quality of life of their shared constituents (living and working/attending school) in (name of entity) and Harris County Precinct 4; and

WHEREAS, (name of project) is critical infrastructure that serves the shared goals of (name of entity) and Harris County Precinct 4;

BE IT RESOLVED that (name of entity) commits to submitting a partnership application with Harris County Precinct 4 in (name of project) and commits to \$(amount of funds) in this goal

Figure: Resolution Mockup



The image shows a resolution mockup template for Harris County Precinct 4. At the top center is the seal of Harris County Precinct 4, featuring a star and the text "HARRIS COUNTY PRECINCT 4" and "COMMISSIONER LESLEY BRIONES". Below the seal is the word "Resolution" in a large, bold, serif font, underlined. The main body of the document contains several paragraphs of placeholder text (Lorem ipsum) and a resolution clause. The resolution clause reads: "NOW, THEREFORE, BE IT RESOLVED that the Harris County Commissioners Court hereby respectfully honors Name rhoncus est pellentesque elit ullamcorper. Lacus viverra vitae congue eu consequat ac felis donec. Aliquam ultrices sagittis orci a scelerisque. At augue eget arcu dictum varius. Ipsum suspendisse ultrices gravida dictum fusce." Below the resolution clause is a line for the County Judge's signature, followed by four lines for the signatures of Commissioners from Precincts 1, 2, 3, and 4. At the bottom right, there is a line for the County Clerk's signature. The entire document is enclosed in a black rectangular border.

**Resolution**

WHEREAS, Lorem ipsum dolor sit amet, consectetur adipiscing elit, sed do eiusmod tempor incididunt ut labore et dolore magna aliqua. Morbi tristique senectus et netus et malesuada fames ac. In hendrerit gravida rutrum quisque non tellus orci ac.

WHEREAS, Orci porta non pulvinar neque laoreet suspendisse interdum consectetur libero. Imperdiet dui accumsan sit amet. Faucibus vitae aliquet nec ullamcorper. Non enim praesent elementum facilisis leo vel fringilla.

WHEREAS, Quisque non tellus orci ac auctor augue mauris. Nullam ac tortor vitae purus faucibus ornare suspendisse sed. Sif amet consectetur adipiscing elit ut aliquam. Vulputate dignissim suspendisse in est ante in. Imperdiet proin fermentum leo vel orci porta non pulvinar.

WHEREAS, Fringilla phasellus faucibus scelerisque eleifend donec pretium. Egestas quis ipsum suspendisse ultrices gravida dictum. Risus commodo viverra maecenas accumsan lacus vel facilisis. Tristique nulla aliquet enim tortor at auctor urna nunc. Rutrum quisque non tellus orci ac auctor augue mauris.

**NOW, THEREFORE, BE IT RESOLVED that the Harris County Commissioners Court hereby respectfully honors**

Name rhoncus est pellentesque elit ullamcorper. Lacus viverra vitae congue eu consequat ac felis donec. Aliquam ultrices sagittis orci a scelerisque. At augue eget arcu dictum varius. Ipsum suspendisse ultrices gravida dictum fusce.

It is hereby ORDERED that this Resolution be included in the minutes of Commissioners Court this the XXh day of Month, year.

\_\_\_\_\_  
Lina Hidalgo, County Judge

\_\_\_\_\_  
Rodney Ellis  
Commissioner, Precinct 1

\_\_\_\_\_  
Adrian Garcia  
Commissioner, Precinct 2

\_\_\_\_\_  
Tom S. Ramsey, P.E.  
Commissioner, Precinct 3

\_\_\_\_\_  
Lesley Briones  
Commissioner, Precinct 4

ATTEST:

\_\_\_\_\_  
Tenesha Hudspeth, County Clerk  
Harris County, T E X A S